



GAT MONTHLY MEMBERSHIP PROGRESS REPORT

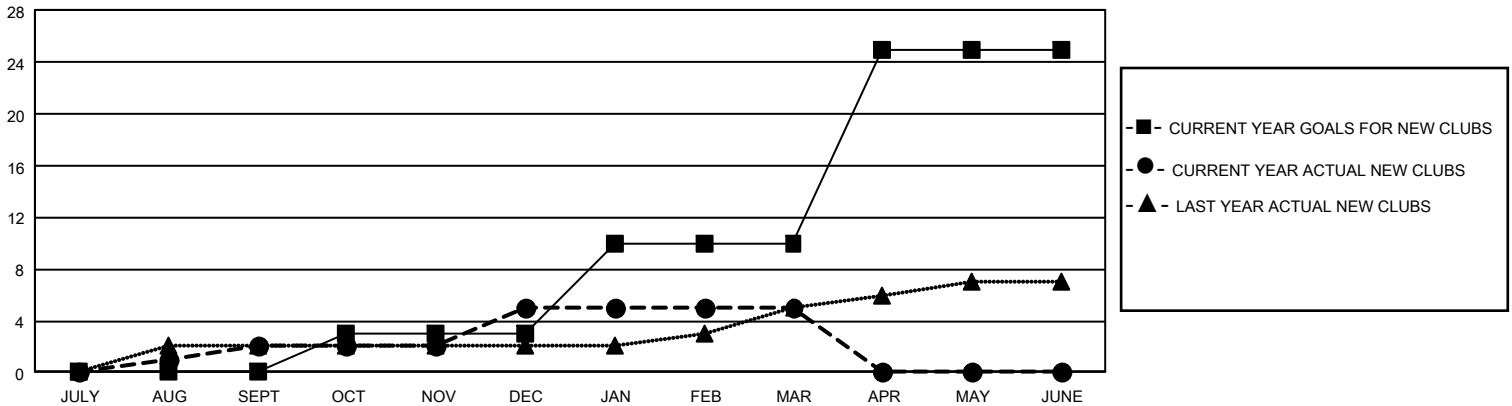
Results as of: 3/31/2021

GMT Constitutional Area 4, Group B

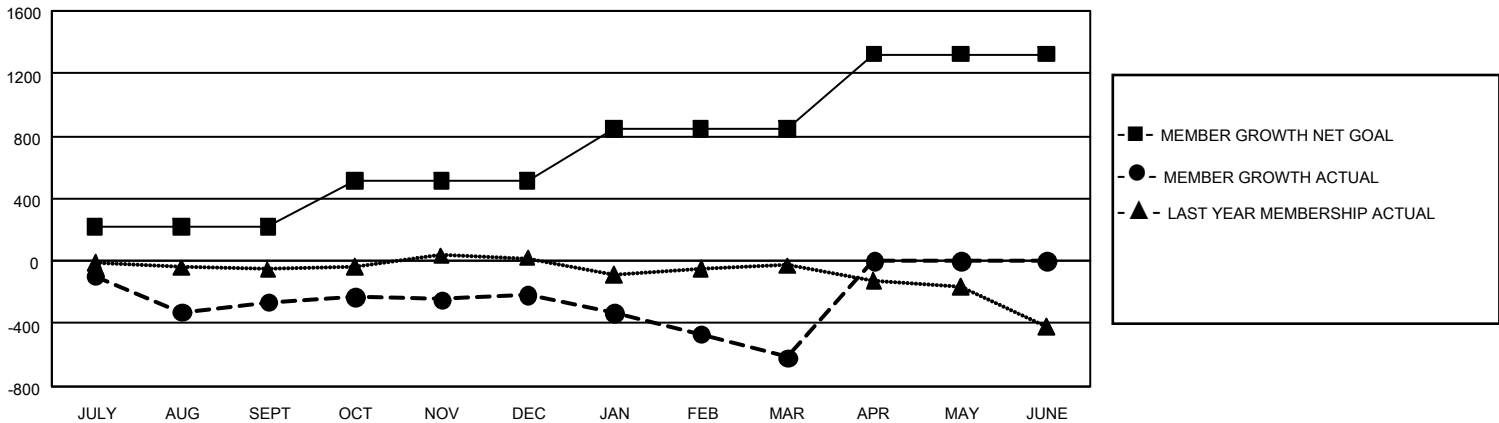
REPORT DOES NOT INCLUDE CLUBS IN UNDISTRICTED AREAS.

| Clubs | | | | Members | | | |
|-----------------------|---------------|-----------|---------------|-----------------------|------------------------|----------------------|--|
| RESULTS FOR 2020-2021 | | | | RESULTS FOR 2020-2021 | | | |
| QUARTER | NEW CLUB GOAL | NEW CLUBS | DROPPED CLUBS | QUARTER | MEMBER GROWTH NET GOAL | MEMBER GROWTH ACTUAL | DROPPED MEMBERS ACTUAL (including transfers) |
| JULY/AUG/SEPT | 0 | 2 | 2 | JULY/AUG/SEPT | 217 | 602 | 804 |
| OCT/NOV/DEC | 9 | 3 | 1 | OCT/NOV/DEC | 295 | 568 | 466 |
| JAN/FEB/MAR | 21 | 0 | 1 | JAN/FEB/MAR | 333 | 436 | 767 |
| APR/MAY/JUNE | 45 | 0 | 0 | APR/MAY/JUNE | 479 | 0 | 0 |

GOALS AND ACTUAL NEW CLUBS CUMULATIVE



GOALS AND ACTUAL MEMBERS CUMULATIVE



DROPPED CLUBS: 4

821 CLUBS OF 2,113 ADDED 1 OR MORE NEW MEMBERS

GENDER DISTRIBUTION

MALE 60,004 (84.52%)
FEMALE 10,986 (15.48%)

DROPPED MEMBERS

| | |
|----------------|--------------|
| DECEASED | 624 |
| CLUB CANCELLED | 10 |
| OTHER | 1,398 |
| TOTAL | 2,032 |

[CLICK HERE FOR CUMULATIVE MEMBERSHIP DATA](#)

TOTAL FAMILY UNIT MEMBERS 802

FAMILY MEMBERS PAYING HALF DUES 384